



# Let's Collaborate to Grow bigger & better

Assured Returns through  
Channel Partner Program

Information Brochure

[www.unilead.in](http://www.unilead.in)



# Why Channel Partner Program

Strategic partnership is vital to break the clutter and thrive in today's competitive world. Realizing the importance of partnership program, Unilead Software Solution has created a robust and all-encompassing Channel Partner Program that fosters mindshare and engagement.

Collaboration with different stakeholders is critical for organizations to realize the shared goals. Therefore, considering channel partners as our extended team members, we have created a program that meets their requirements, suits them and provides the rewards that they deserve.

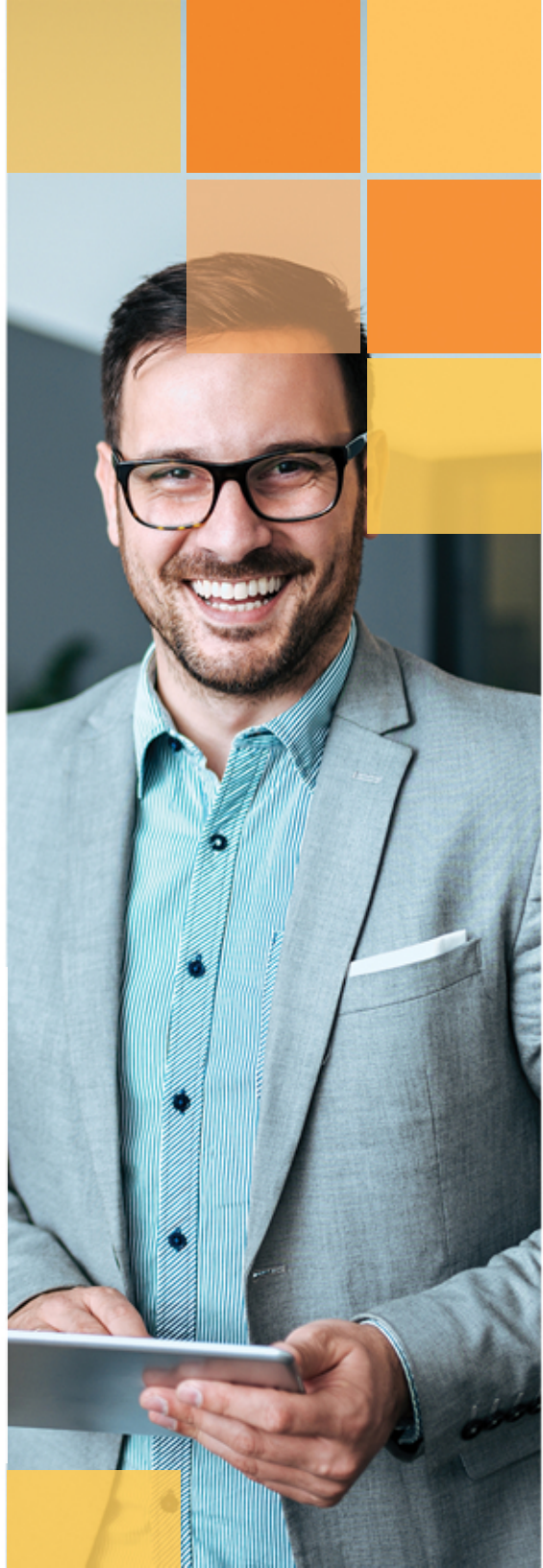
Keeping in view the interests of Partners, Unilead Software Solution has devised a channel partner program that is

- *Simple*
- *Profitable*
- *Unique*

## What we offer

A highly dynamic company, Unilead caters to wide range of industry offering simple yet powerful ERP solution that helps various organisations do their routine business activities and maintain the progress of a multitude of business processes under a single system.

With a proven track record of 18 + years, Unilead has satisfied clients across the boundaries. Although Unilead takes pride in creating robust and agile software solution, however technological excellence is not enough for selling a product. Realizing the dynamic of IT industry, Unilead has created a program that backs heavily on marketing resources, after-sales product support and on-going training program.



# Advantage of Unilead Channel Partner Program

Unilead Software Solution already has Strong client base in India and it has become possible only because of its highly dynamic and enterprising Channel Partners. Unilead takes pride in the fact that 70% of business comes through its channel partners. Channel partners are the biggest strength of Unileads and are the pillars of strength.

Unilead offers you a platform to achieve scalable growth with minimal additional infrastructure or upfront costs.

## How we can Work Together

We can work together by two ways

*Referrals*

*Channel Partner*

Join our network of the profitable venture with the referral program, and once you have quite a few referrals and good knowledge of product, you can become our Channel Partner.



# Responsibilities for a Channel Partner

- *Lead Generation*
- *Pre-sale activities like giving demos follow up etc.*
- *Lead maturity*
- *Documentations*
- *Payment confirmations*
- *Installation of software and implementation*

## Benefits of Channel Partner

- *Attractive profit margin*
- *Implementation and training for deep knowledge of product*
- *Preference in the upcoming opportunities in IT field with Unilead*
- *Trusted partnership and growth with Unilead*

# Referral Programme

It is quick and easy option to work with us, as you have to provide prospectus lead only. In the beginning, Unilead Software Solution recommends opting for the referral program, in this program no deep knowledge is required to sell the product.

## Responsibilities for a Referral

- *Developing knowledge about the local market*
- *Creating awareness about Unilead products, services and the existing network*

## Benefits of Referral Programme

- *Attractive margin*
- *Shared growth with Unilead*
- *Trusted partnership*

# Our ERP Solutions

*Each of our products is created in way that it, not only minutely meets the client's requirement but also surpasses their expectation in terms of technical standards, time frame and follow-up services.*



## **eAcademics ERP**

eAcademics is a complete School & Collage management ERP with mobile APP , which covers 25 different modules that help the school to manage all departments efficiently.

Explore More at :- [www.eacademics.in](http://www.eacademics.in)



## **eBrickkiln ERP**

One of its kind ERP solution, eBrickkiln is especially created to take your Brickkiln business to an all new level.

Explore More at :- [www.ebrickkiln.com](http://www.ebrickkiln.com)  
[www.brickkilnsoftware.net](http://www.brickkilnsoftware.net)



## **eBill Pro**

Robust and flexible, eBill Pro is highly effective for small and medium enterprises to help manage the account, inventory, GST, billing and production management process.

Explore More at :- [www.ebillpro.in](http://www.ebillpro.in)



## **aPro DMS**

A dealership management solution for All brand of two/four-wheeler , AProDMS promises to take your auto business to next level.

Explore More at :- [www.aprosolution.in](http://www.aprosolution.in)







***Wait No More!  
Become a  
Channel Partner now  
to start earning Big!!!***

## CONTACT US

---

 Unilead Software Solution Pvt. Ltd.  
JCT Chohal, Distt.  
Hoshiarpur, Punjab, India

 +91-98786-52452  
+91-87250-52452

 [info@unilead.in](mailto:info@unilead.in)  
[www.unilead.in](http://www.unilead.in)

